

SYSTEM **KAN-therm**

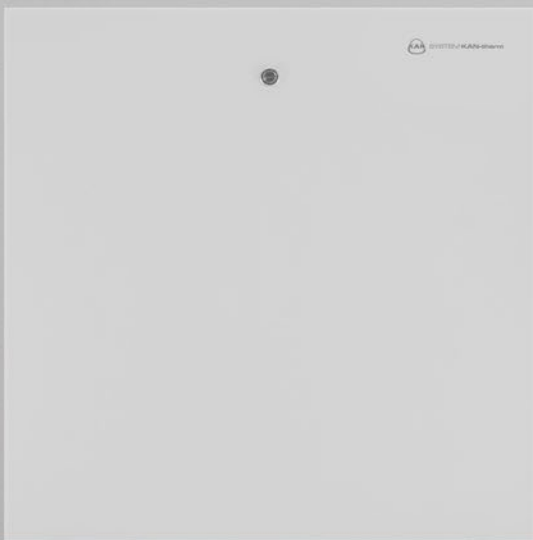
Install your future



EN 20/04

Cabinets Slim & Slim+

- Unique **frameless construction**
- Modern **design**
- Assembly **without additional tools**
- **Designated constructions:**
Slim for CH manifolds
Slim+ for surface heating manifolds and control automation elements
- **Protective film** - factory provided protection of the cabinet front from damage during assembly and finishing works





1

Surface protection

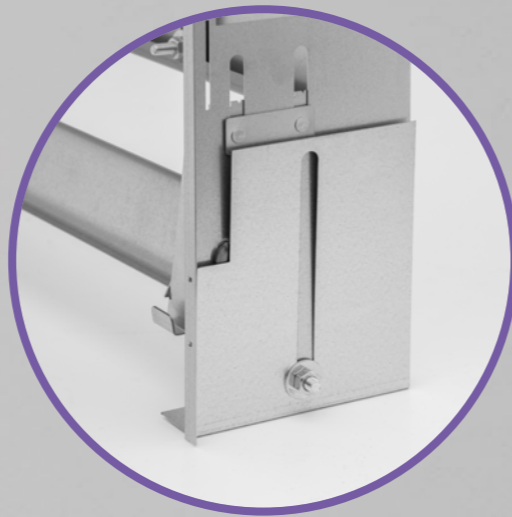
using a special protective foil protects cabinets against damage during assembly and finishing works



2

Easy installation

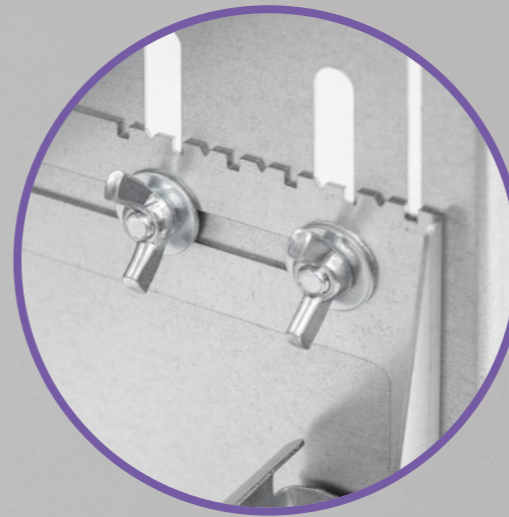
vertical adjustment of the front and body for the entire life cycle



3

Cabinet depth regulation

allows versatile assembly, also of manifolds with pumping mixing units



4

Move & Lock function

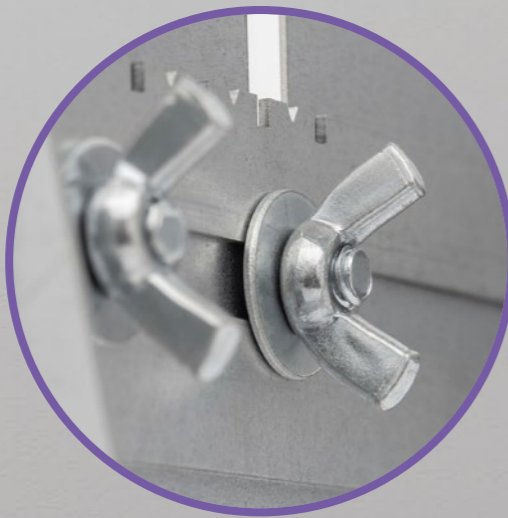
special design of the manifold's fastening bolts thanks to which they can be freely positioned on the mounting rail, without the need to screw them on or risking their moving along the rail



8

Comfortable work

thanks to wing nuts no additional tools are needed



Slim



Slim+

5

Functionality

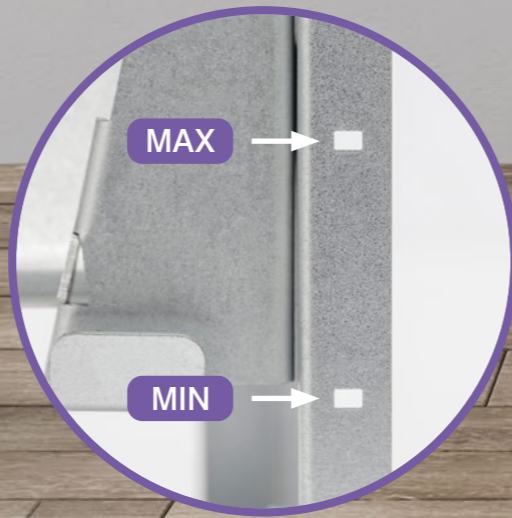
Shutters, placed in the upper part of the Slim+ cabinet body, enable an easy way of connecting the pipes supplying the manifold or the electric wires of the automatics, DIN rail allows for quick and easy assembly of control automatics elements



7

Information about the floor height

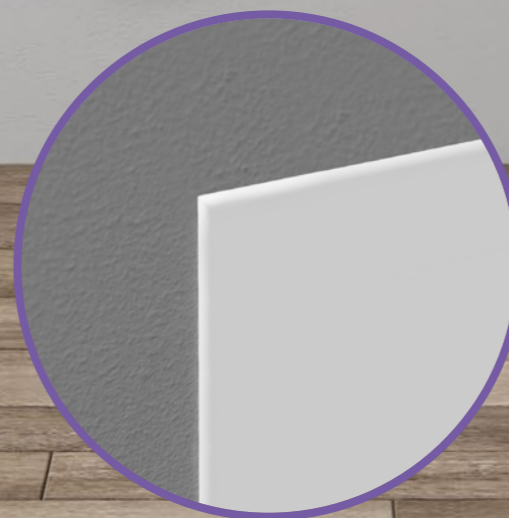
"min" and "max" markers for the total thickness of the finished flooring



6

Clean, aesthetic surfaces

thin cabinet front fits in perfectly with the wall surface



Unique frameless construction

Recess mounted Slim cabinets

intended for mounting radiator manifolds or manifolds serving domestic water systems.

Cabinet type	Catalogue code	The width of the recess construction (+5 mm)	Width cabinets' front	The height of the recess	Whole cabinet's height	Whole recess' depth	Whole cabinet's depth
Slim 350	1445117036	350 mm	418 mm	560 - 660 mm	595 - 725 mm	110 - 160 mm	112 - 162 mm
Slim 450	1445117037	450 mm	518 mm	560 - 660 mm	595 - 725 mm	110 - 160 mm	112 - 162 mm
Slim 580	1445117038	580 mm	648 mm	560 - 660 mm	595 - 725 mm	110 - 160 mm	112 - 162 mm
Slim 780	1445117039	780 mm	848 mm	560 - 660 mm	595 - 725 mm	110 - 160 mm	112 - 162 mm
Slim 930	1445117040	930 mm	998 mm	560 - 660 mm	595 - 725 mm	110 - 160 mm	112 - 162 mm

Recess mounted Slim+ cabinets

designed for mounting manifolds for surface heating and control automation elements.

Cabinet type	Catalogue code	The width of the recess construction (+5 mm)	Width cabinets' front	The height of the recess	Whole cabinet's height	Whole recess' depth	Whole cabinet's depth
Slim+ 450	1414183018	450 mm	518 mm	750 - 850 mm	785 - 915 mm	110 - 160 mm	112 - 162 mm
Slim+ 550	1414183019	550 mm	618 mm	750 - 850 mm	785 - 915 mm	110 - 160 mm	112 - 162 mm
Slim+ 700	1414183020	700 mm	768 mm	750 - 850 mm	785 - 915 mm	110 - 160 mm	112 - 162 mm
Slim+ 850	1414183021	850 mm	918 mm	750 - 850 mm	785 - 915 mm	110 - 160 mm	112 - 162 mm
Slim+ 1000	1414183022	1000 mm	1068 mm	750 - 850 mm	785 - 915 mm	110 - 160 mm	112 - 162 mm
Slim+ 1200	1414183023	1200 mm	1268 mm	750 - 850 mm	785 - 915 mm	110 - 160 mm	112 - 162 mm



KAN Group
e-mail: kan@kan-therm.com

www.kan-therm.com

EN 20/04

ISO 9001